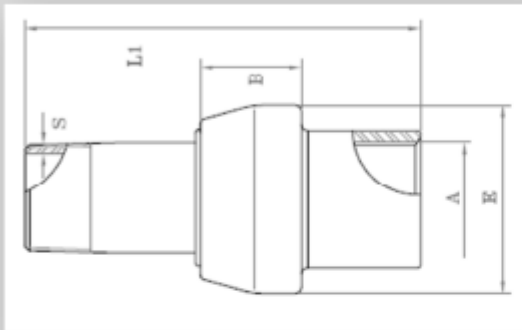


MONOLITHIC INSULATING JOINTS Class PN10 specification

Working Temperature	Electric insulation	Dielectric resistance	Testing pressure	Working pressure
-10°C+70°C	10 Mohm	3.0 KV	15kg/cm ²	10kg/cm ²

MF-Male Female



- Hot forged socket: ASTM A 105 or equivalent
- Hot forged spigot: API 5L gr.B or equivalent
- Insulating ring in polycarbonate
- Gasket ring in Hytrel 40 D Dupont
- Epoxyphenolic painting
- Threads ends: ISO7/EN10226-1

Product Code	ND	A	E	B	L1	Weight (in Kg)
GDMF015	1/2"	21.3	46	28	100	0.4
GD MF020	3/4"	26.7	53	30	110	0.5
GD MF025	1"	33.4	60	32	120	0.7
GD MF032	1" 1/4	42.2	71	35	135	1.0
GD MF040	1" 1/2	48.3	77	37	145	1.2
GD MF050	2"	60.3	90	38	150	1.7
GD MF065	2" 1/2	76.1	113	53	170	3.0
GD MF080	3"	88.9	127	53	200	4.0
GD MF100	4"	114.3	156	65	200	6.5

NB: The dimensions reported in the table are in millimeters (mM)

Certificates issued: EN 10204 3.1 and CE compliance

