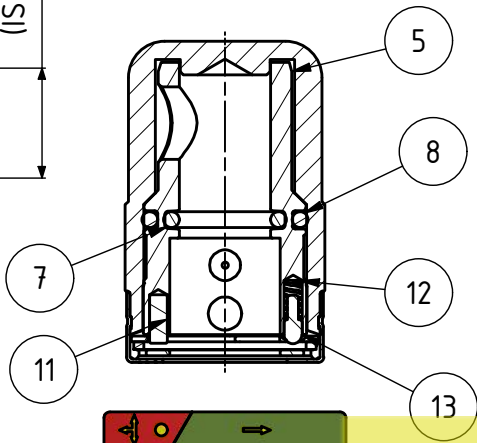
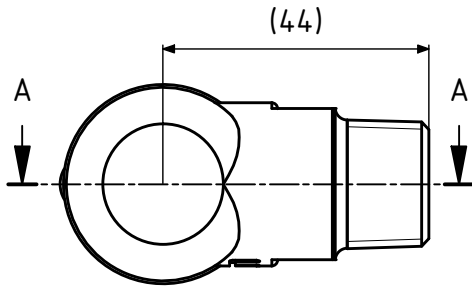


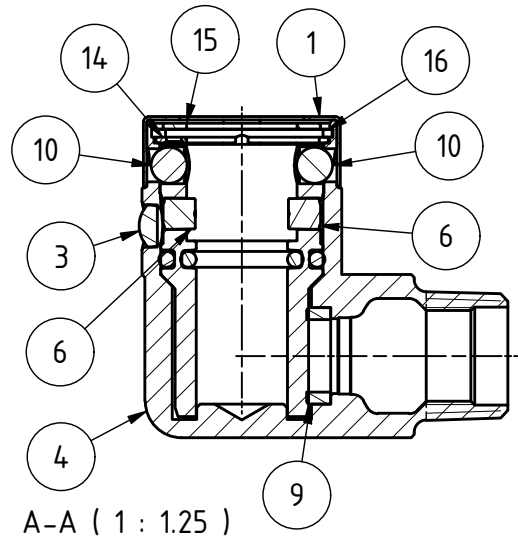
B-B ( 1 : 1.25 )



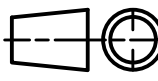



16	Snap ring SB 29	1	1.4310	657.06.018
15	Rondella	1	1.4310	657.06.017
14	Ghiera di posizione	1	1.4310	657.06.016
13	Perno di sicurezza	1	1.4310	657.06.015
12	Molla	1	1.4310	657.06.014
11	Spina 3 x 8	1	1.4310	657.06.013
10	Sfera D6	2	1.4301	657.06.012
9	Guarnizione sagomata	1	NBR	657.06.510
8	O-Ring 130	1	NBR	657.06.108
7	O-ring 119 (15.08x2.62)	1	NBR	657.06.107
6	Perno di fermo	2	CW 614 N	657.02.005
5	Internal body	1	CW 614 N	657.02.502
4	Worked body	1	CW 617 N	657.21.551
3	Finestra di posizione	1	Polycarbonato	657.06.020
2	Etichetta adesiva	1	Carta adesiva	657.06.019
1	Ghiera di copertura	1	Acciaio	657.26.006
Pos.	Description	Q.ty	Material	Code (p/n)



Per: MARCATURA, CODICE PRODOTTO, DESCRIZIONE e TIPO DI IMBALLO, fare riferimento al disegno codice 657.82.550



A-A ( 1 : 1.25 )

 REVISION No.	Ripristinato codice ghiera 65726006		30/08/2016	FB	GENERAL TOLERANCE EN 22768 cl. ____ K	
	REVISION DESCRIPTION		REVISION DATE	MODIFIED BY	CONTROL. BY	PRE TREATMENT PART NUMBER
 CRITICAL For critical and important dimensions subjected to checks for variables we require a CPK value ≥ 1,33	DO NOT INTERPRET THE DRAWINGS, IF YOU HAVE DOUBTS ENQUIRE FOR EXPLANATIONS		PAPER SIZE A4	SCALE 1 : 1.25	DATE 29/06/2000	TREATMENT
	REFERENCE: 65701550		DRAWN BY AB	CONTROL. BY	WEIGHT 301,4 g	MATERIAL
 IMPORTANT			DESCRIPTION Assembled without TAE		PART NUMBER 657.01.550	
	PROJECT GROUP SOCKET DIN 15069					

Questo disegno è un documento confidenziale di proprietà della OMB Saleri S.p.A., che se ne riserva la tutela a termini di legge. Senza nostra autorizzazione non può essere riprodotto. This drawing is a confidential document and it is property of OMB Saleri S.p.A.. All rights are reserved. Any infringement will be legally pursued. Without authorization no copy is allowed.